



Package Contents

- Satellite Internet IPmodem
- CD-ROM with Terminal Manual
- Power Adapter
- Ethernet Network Cable
- IPmodem Quick Setup Guide (also included on the CD-ROM)

There are two basic configurations to connect your IPmodem:

- Connect a single computer to your IPmodem.
- Connect a Local Area Network to your IPmodem.

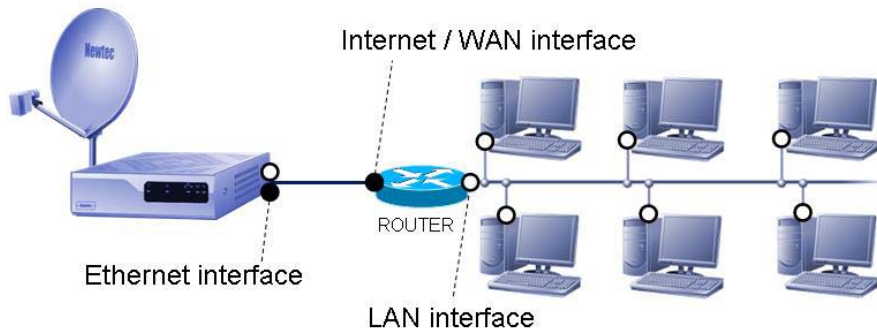
1 Connect the IPmodem

- Power down your network devices.
- Locate an optimum location for the IPmodem. If you wish to use the delivered Ethernet cable, the IPmodem is placed within 2 meters of your computer or router. Alternatively use a longer Ethernet cable.
- Screw on the indoor F-connectors to the coax cables using the 11mm spanner.
- Connect the indoor Tx and Rx connectors to the IPmodem.
- Connect your computer or Ethernet device (router, ...) to the IPmodem's LAN port.
- Power on your IPmodem. The power, network and alarm LED are now on.
- After less than one minute the Rx LED becomes green.
- After two to three minutes the alarm LED switches off (Tx may be on now).



2 Connect a LAN to the IPmodem

To connect the IPmodem to a network, a router is needed. The IPmodem has to be connected to the Internet/WAN interface of the router. In the router configuration, the Internet/WAN interface must be set to DHCP mode. Please refer to the router's manual for a description of how to set the Internet interface to DHCP mode and how to connect the router to your LAN (local area network).



Important

The IPmodem web interface is accessible through the IPmodem default gateway. The IPmodem default gateway address can be looked up through the router's web interface.

Please refer to your router's manual for a description of how to look up the default gateway address.

3 Troubleshooting

Problem indication	Possible solution
No connectivity with terminal web interface.	The terminal has no connectivity with the satellite network. Give your connected PC a fixed IP address in the range of the terminal management IP address.
Error information in the web interface: <ul style="list-style-type: none">•No demodulator lock•Modem LED is red	1. Is the antenna correctly pointed? 2. Is there a problem with the connectivity between terminal and antenna? 3. Verify the configuration of the air interface. <ul style="list-style-type: none">•Frequency•Polarisation•Symbol rate•...
Error information in the web interface: Network lookup failed – RMT table lookup failed (verify Population Id)	Verify the configuration of the population id in the configuration – air interface: Default value=0
Error information in the web interface: Network login failed	Is the antenna properly pointed? Is the terminal provisioned by the ISP?